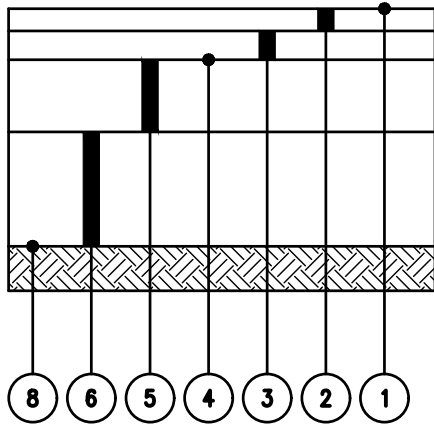
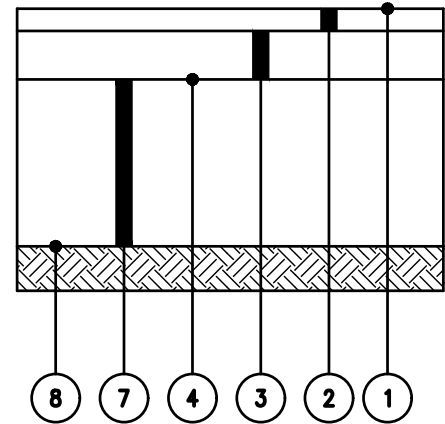


**OPTION A  
ASPHALT PAVEMENT**



**OPTION B  
COMPOSITE PAVEMENT**



**PAVEMENT SECTION ITEMS**

**0-1500 ADT                      1500+ ADT  
RESIDENTIAL STREET    MAJOR COLLECTOR**

①	MARYSVILLE ITEM 1540-ASPHALT REJUVENATING AGENT (RECLAIMITE)		
②	ITEM 441 ASPHALT CONCRETE, SURFACE COURSE, TYPE 1, (448), PG70-22	1.5"	1.5"
③	ITEM 441 ASPHALT CONCRETE, INTERMEDIATE COURSE, TYPE 2, (448), PG64-22	1.5"	2"
④	ITEM 407 - NON-TRACKING TACK COAT	PER 407.06	PER 407.06
⑤	ITEM 301 - ASPHALT CONCRETE BASE, PG64-22	4"	6"
⑥	ITEM 304 - AGGREGATE BASE	4"	4"
⑦	ITEM 305 - PORTLAND CEMENT CONCRETE BASE, RCC	6"	7"
⑧	ITEM 204 - COMPACTED SUBGRADE		

NOT TO SCALE

Date: 1/1/20

Standard Construction Drawing



**STREET PAVEMENT SECTIONS**

Drawing No.

**STR-13**