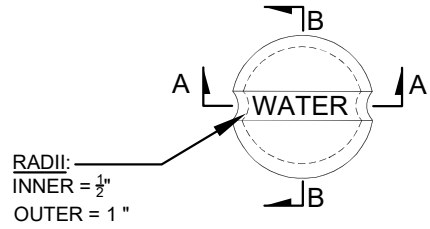
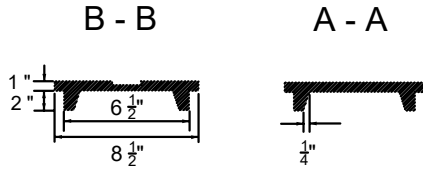
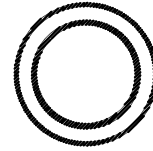
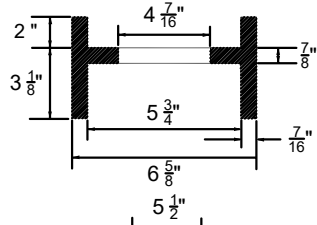


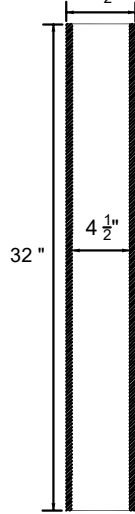
LID
17 LBS.



RISER
14 LBS.



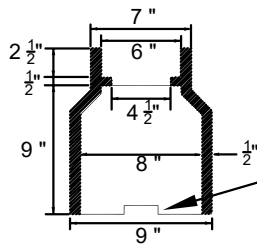
STEM
64 LBS.



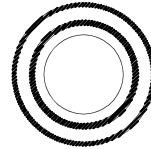
Note:

-NOT TO SCALE
-AVERAGE WEIGHTS TO THE NEAREST EVEN LB. CALCULATED USING 0.26 LB/CU IN

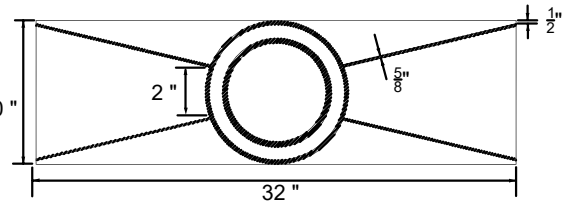
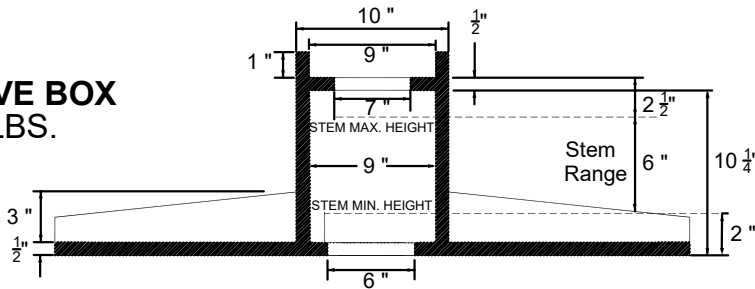
BASE
41 LBS.



BASE WILL BE LEVEL OVER VALVE NUT AND THE NUT IS NOTE TO EXTEND MORE THAN 2" INTO THE BASE.



VALVE BOX
120 LBS.



SECTION VIEW

PLAN VIEW

NOT TO SCALE

DATE: MARCH 2023

STANDARD CONSTRUCTION DRAWING



HEAVY DUTY VALVE BOX

DRAWING NO.
WTR-05