

\* CENTERLINE OF METER TO BE DETERMINED BY ENGINEER

NOTES:

1. METER NOT INCLUDED
2. FRAME & LID NOT INCLUDED

ITEM	DESCRIPTION	PART No.	REQ'D
1	1 1/2" BALL ANGLE METER VALVE	500B2428601	1
2	QUARTER BEND METER COUPLING	500H14204	1
3	PVC STABILIZING BRACKETS	700061	2
4	1 1/2" BRASS RISERS	-	2
5	CAST IRON LID FRAME	700098-1	1
6	PVC SHELL	780007	1
7	1 1/2" BRASS 90° ELBOW	094988	2
8	1 1/2" MIP CONNECTIONS	-	2
9	OCT. LOCK NUT	790038	4
10	18" C.I. SIDE LOCK LID	683594	1
11	27" X 4" INSULATION PAD	790058	1
12	METER	-	1

Date: 3/02/2018

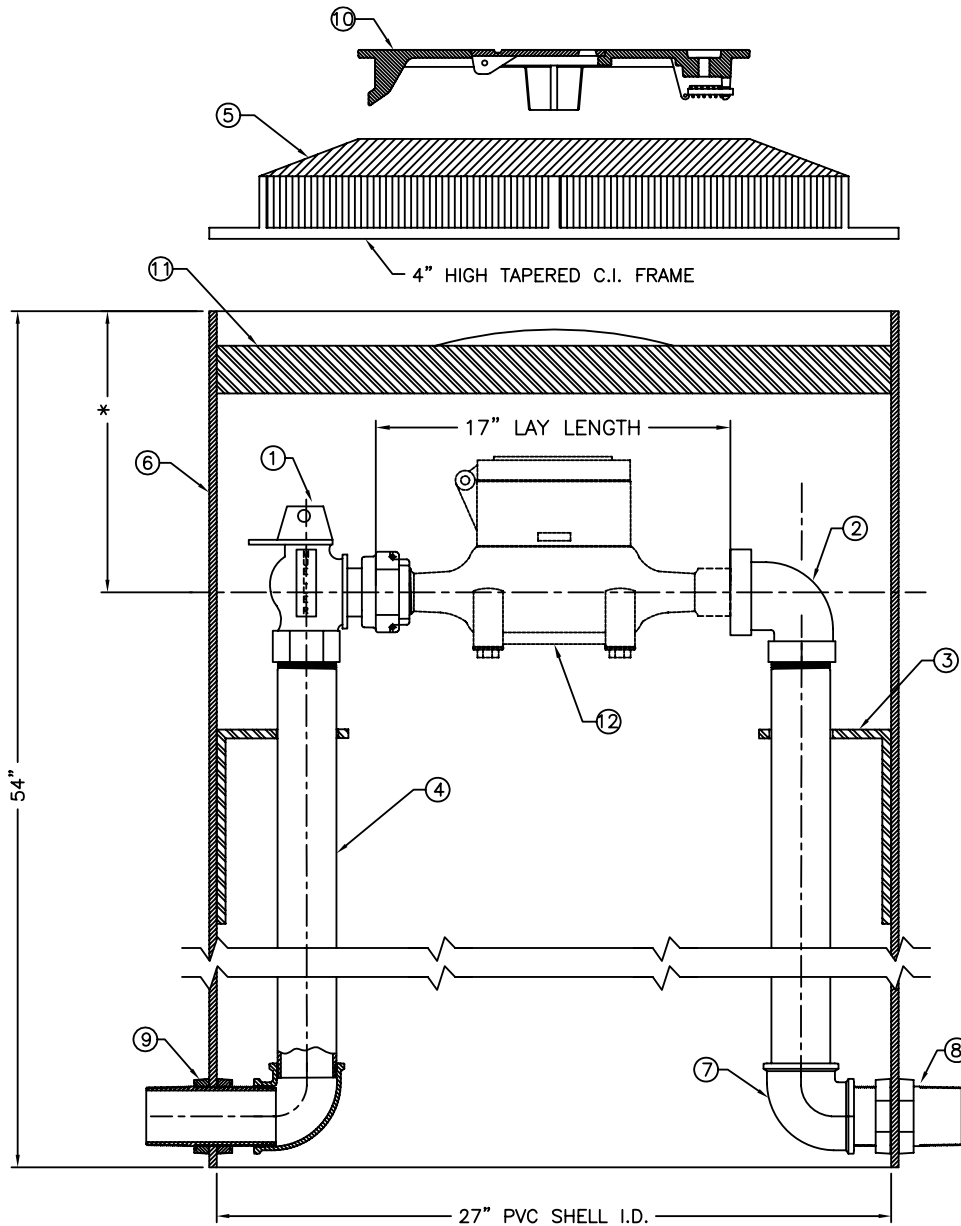
Standard Construction Drawing



1 1/2" Meter Vault

Drawing No.

WTR-33



\* CENTERLINE OF METER TO BE DETERMINED BY ENGINEER

NOTES:

- 1. METER NOT INCLUDED
- 2. FRAME & LID NOT INCLUDED

ITEM	DESCRIPTION	PART No.	REQ'D
1	2" BALL ANGLE METER VALVE	550B2428601	1
2	QUARTER BEND METER COUPLING	550H14204	1
3	PVC STABILIZING BRACKETS	700062	2
4	2" BRASS RISERS	-	2
5	CAST IRON LID FRAME	700098-1	1
6	PVC SHELL	780007	1
7	2" BRASS 90° ELBOW	790041	2
8	2" MIP CONNECTIONS	-	2
9	OCT. LOCK NUT	790043	4
10	18" C.I. SIDE LOCK LID	683594	1
11	27" X 4" INSULATION PAD	790058	1
12	METER	-	1

Date: 3/02/2018

Standard Construction Drawing



2" Meter Vault

Drawing No.

WTR-33A